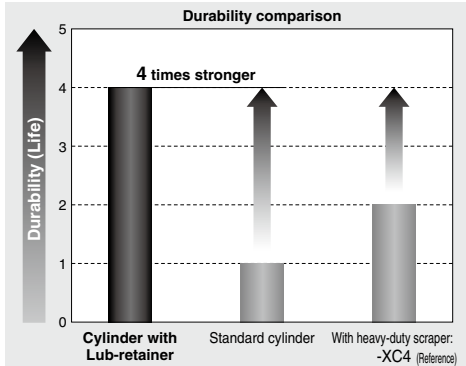


Cylinder with Stable Lubrication Function (Lub-retainer)

CM2/CG1/CA2/CQS/CQ2/MXQ/MGP/CXSJ/CXS Series

Applicable to operation in micro-powder (20 to 100 μm)/general environments

Durability is **4 times stronger** than the standard model in micro-powder environments.

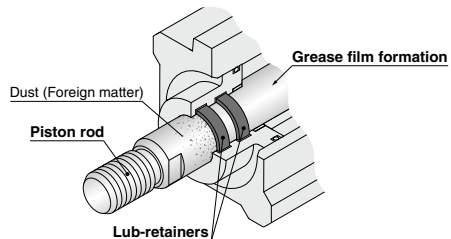


Comparison with the standard model and model with heavy-duty scraper (-XC4) (Relative ratio of B10)

* The durability test is conducted in accordance with SMC test conditions.

As the Lub-retainer is mounted at two locations,

- Grease film is formed on the piston rod surface to improve the durability.
- Entry of dust and foreign matter is prevented.



- The number of operating cycles can be improved even in general environments.

Applicable Cylinders

Air Cylinder Series CM2 ø20 to ø40 (RoHS)	Air Cylinder Series CG1 ø20 to ø100 (RoHS)	Air Cylinder Series CA2 ø40 to ø100 (RoHS)	Compact Cylinder/Compact Type Series CQS ø20 and ø25 (RoHS)
Compact Cylinder Series CQ2 ø32 to ø100 (RoHS)	Air Slide Table Series MXQ□A ø6 to ø25 (RoHS)	Compact Guide Cylinder Series MGP ø20 to ø100 (RoHS)	Dual Rod Cylinder/Compact Type Series CXSJ ø6 to ø32 (RoHS)
Dual Rod Cylinder Series CXS ø6 to ø32 (RoHS)			

Air Cylinder with Stable Lubrication Function (Lub-retainer)

Standard: Double Acting, Single Rod

CM2 Series

ø20, ø25, ø32, ø40

RoHS



How to Order

CM2 C 20 M-50 □ Z-N V

With auto switch **CDM2 C 20 M-50 □ Z-N V - M9BW □**

With auto switch
(Built-in magnet)

Mounting

B	Basic (Double-side bossed)
L	Axial foot
F	Rod flange
G	Head flange
C	Single clevis
D	Double clevis
T	Head trunnion
U	Rod trunnion
E	Integral clevis
V	Integral clevis (90°)
BZ	Boss-cut/Basic
FZ	Boss-cut/Rod flange
UZ	Boss-cut/Rod trunnion

Bore size

20	20 mm
25	25 mm
32	32 mm
40	40 mm

With stable lubrication function (Lub-retainer)

Cylinder stroke

Bore size (mm)	Standard stroke (mm)	Maximum stroke (mm)
20	25, 50, 75, 100, 125, 150, 200, 250, 300	1000
25	25, 50, 75, 100, 125, 150, 200, 250, 300	
32	25, 50, 75, 100, 125, 150, 200, 250, 300	
40	25, 50, 75, 100, 125, 150, 200, 250, 300	

* Manufacture of intermediate strokes in 1 mm intervals is possible.

Number of auto switches

Nil	2 pcs.
S	1 pc.
n	n pcs.

Auto switch

Nil	Without auto switch
------------	---------------------

* Applicable auto switch is the same as for the standard model.

Rod end bracket

Nil	None
V	Single knuckle joint
W	Double knuckle joint

* No bracket is provided for the female rod end type.
* A knuckle joint pin is not provided with the single knuckle joint.
* Rod end bracket is shipped together with the product, but not assembled.

Pivot bracket

Nil	None
N	Pivot bracket is shipped together with the product, but not assembled.

* Only for C, T, U, E, V, UZ mounting types.
* Pivot bracket is shipped together with the product, but not assembled.

Rod end thread

Nil	Male rod end
F	Female rod end

Specifications

Bore size (mm)	20	25	32	40
Minimum operating pressure	0.1 MPa			
Other specifications	Same as the standard model			
Dimensions	Same as the standard model			

* Lube-retainer or rod seal cannot be replaced.

Air Cylinder with Stable Lubrication Function (Lub-retainer)

Standard: Double Acting, Single Rod

CG1 Series

RoHS

ø20, ø25, ø32, ø40, ø50, ø63, ø80, ø100



How to Order

CG1 **B** **N** **20** **M** - **100** **Z** - **V**
 With auto switch **CDG1** **D** **N** **20** **M** - **100** **Z** - **N** **W** - **M9BW**

With auto switch
(Built-in magnet)

Mounting

B	Basic
Z*	Basic (without trunnion mounting female thread)
L	Axial foot
F	Rod flange
G	Head flange
T*	Head trunnion
D	Clevis

- * Not available for ø80 or ø100.
- * Mounting bracket is shipped together with the product, but not assembled.
- * The cylinder for F, G, L, D mounting types is Z: Basic (without trunnion mounting female thread).

Bore size

20	20 mm
25	25 mm
32	32 mm
40	40 mm
50	50 mm
63	63 mm
80	80 mm
100	100 mm

With stable lubrication function (Lub-retainer)

Specifications

Bore size (mm)	20	25	32	40	50	63	80	100
Minimum operating pressure	0.1 MPa							
Other specifications	Same as the standard model							
Dimensions	See below							

Rod end thread

Nil	Male rod end
F	Female rod end

Pivot bracket

Nil	None
N	Pivot bracket is shipped together with the product, but not assembled.

- * Only for D, T mounting types
- * Pivot bracket is shipped together with the product, but not assembled.

Rod end bracket

Nil	None
V	Single knuckle joint
W	Double knuckle joint

- * No bracket is provided for the female rod end type.
- * Rod end bracket is shipped together with the product, but not assembled.
- * A knuckle joint pin is not provided with the single knuckle joint.

Number of auto switches

Nil	2 pcs.
S	1 pc.
n	n pcs.

Auto switch

- | | |
|------------|---------------------|
| Nil | Without auto switch |
|------------|---------------------|
- * Applicable auto switch is the same as for the standard model.

Cylinder stroke

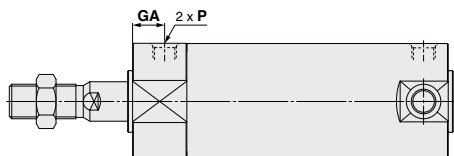
(mm)

Bore size	Standard stroke ^{*1}	Manufacturable stroke
20	25, 50, 75, 100, 125, 150, 200	1 to 1000
25		
32		
40		
50, 63	25, 50, 75, 100, 125, 150, 200, 250, 300	1 to 1000
80		
100		

- *1 Intermediate strokes not listed above are produced upon receipt of order. Manufacture of intermediate strokes at 1 mm intervals is possible. (Spacers are not used.)
- * Applicable strokes should be confirmed according to the usage. For details, refer to "Air Cylinders Model Selection" on pages 8 to 19. In addition, the products that exceed the standard stroke might not be able to fulfill the specifications due to the deflection etc.

Dimensions (Dimensions other than those shown below are the same as the standard model.)

* No trunnion mounting female thread is provided on the rod side. (For B: Basic)



Bore size	(mm)	
	GA	P
20	14	M5 x 0.8
25	13	M5 x 0.8
32	(12)	(Rc 1/8)
40	(13)	(Rc 1/8)
50	(14)	(Rc 1/4)
63	(14)	(Rc 1/4)
80	(20)	(Rc 3/8)
100	(20)	(Rc 1/2)

- * When female thread is used, use a washer, etc. to prevent the contact part at the rod end from being deformed depending on the material of the workpiece.
- () : Same as the standard model.
- * The mounting dimensions of the mounting bracket are the same as the standard model.

Air Cylinder with Stable Lubrication Function (Lub-retainer)

Standard: Double Acting, Single Rod

CA2 Series

ø40, ø50, ø63, ø80, ø100

RoHS



How to Order

CA2 L 50 M - 100 Z - [] [] []

With auto switch CDA2 D 50 M - 100 Z - N W - M9BW [] []

With auto switch
(Built-in magnet)

Mounting

B	Basic
L	Axial foot
F	Rod flange
G	Head flange
C	Single clevis
D	Double clevis
T	Center trunnion

Bore size

40	40 mm
50	50 mm
63	63 mm
80	80 mm
100	100 mm

With stable lubrication function (Lub-retainer)

Cylinder stroke

Bore size (mm)	Standard stroke (mm)*	Long stroke (L and F only) (mm)
40	25, 50, 75, 100, 125, 150, 175, 200, 250, 300, 350, 400, 450, 500	800
50, 63	25, 50, 75, 100, 125, 150, 175, 200, 250, 300, 350, 400, 450, 500, 600	1200
80, 100	25, 50, 75, 100, 125, 150, 175, 200, 250, 300, 350, 400, 450, 500, 600, 700	ø80 : 1400 ø100: 1500

* Intermediate strokes not listed above are produced upon receipt of order.

Bracket 1

Nil	Without bracket
N	Pivot bracket

* Only for D, T mounting types
* Pivot bracket is shipped together with the product, but not assembled.

Bracket 2

Nil	Without bracket
V	Single knuckle joint
W	Double knuckle joint

* A knuckle joint pin is not provided with the single knuckle joint.
* Rod end bracket is shipped together with the product, but not assembled.

Number of auto switches

Nil	2 pcs.
S	1 pc.
3	3 pcs.
n	n pcs.

Auto switch

Nil	Without auto switch
-----	---------------------

* Applicable auto switch is the same as for the standard model.

Made to Order

Symbol	Specifications
-XA□	Change of rod end shape
-XC7	Tie-rod, cushion valve, tie-rod nut, etc. made of stainless steel
-XC14	Change of trunnion bracket mounting position
-XC15	Change of tie-rod length

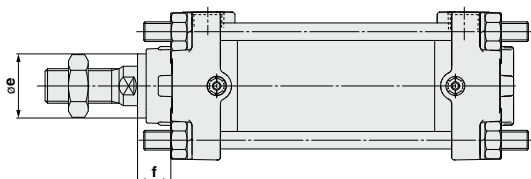
Built-in Magnet Cylinder Model

If a built-in magnet cylinder without an auto switch is required, there is no need to enter the symbol for the auto switch.
(Example) CDA2L40M-100Z

Specifications

Bore size (mm)	40	50	63	80	100
Minimum operating pressure	0.1 MPa				
Other specifications	Same as the standard model				
Dimensions	See below				

Dimensions (Dimensions other than those shown below are the same as the standard model.)



Bore size	øe	f
40	26	13.5
50	30	12.5
63	30	12.5
80	36	16.5
100	42	16

* The mounting dimensions of the mounting bracket are the same as the standard model.

Compact Cylinder with Stable Lubrication Function (Lub-retainer) Standard: Double Acting, Single Rod

CQS Series

ø20, ø25

RoHS



How to Order

With auto switch **CDQS B 20 M - 30 D** - **M9BW**

With auto switch
(Built-in magnet)

Mounting

B	Through-hole/Both ends tapped common (Standard)
L	Foot
LC	Compact foot
F	Rod side flange
G	Head side flange
D	Double clevis

* Mounting brackets are shipped together, (but not assembled).

Bore size

20	20 mm
25	25 mm

With stable lubrication function (Lub-retainer)

Cylinder stroke

Bore size (mm)	Standard stroke (mm)
20	5, 10, 15, 20, 25,
25	30, 35, 40, 45, 50

Number of auto switches

Nil	2 pcs.
S	1 pc.
n	n pcs.

Auto switch

Nil Without auto switch

* Applicable auto switch is the same as for the standard model.

Body option

<Standard stroke>

Nil	Standard
M	Rod end male thread
F	Boss on head end

* Combination of body options (FM) is available.

Action

D Double acting

Built-in Magnet Cylinder Model

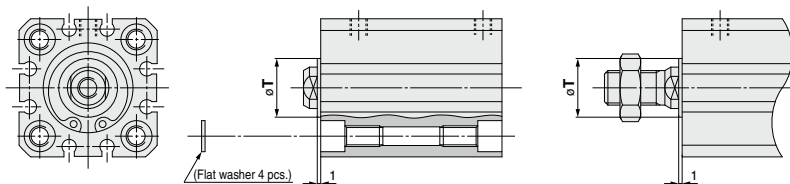
If a built-in magnet cylinder without an auto switch is required, there is no need to enter the symbol for the auto switch.

(Example) CDQSL25M-30D

Specifications

Bore size (mm)	20	25
Minimum operating pressure	0.1 MPa	
Other specifications	Same as the standard model	
Dimensions	See below	

Dimensions (Dimensions other than those shown below are the same as the standard model.)



DM: Rod end male thread

Bore size	Standard stroke	T (mm)
20	5, 10, 15, 20, 25, 30,	15
25	35, 40, 45, 50	18

* The mounting dimensions of the mounting bracket are the same as the standard model.

Mounting Bracket Part No.

Bore size (mm)	Foot	Compact foot	Flange
20	CQS-LM020	CQS-LCM020	CQS-FM020
25	CQS-LM025	CQS-LCM025	CQS-FM025

* The double clevis type is the same as the standard model.

* When ordering foot and compact foot brackets, order 2 pieces per cylinder.

Compact Cylinder with Stable Lubrication Function (Lub-retainer)

Standard: Double Acting, Single Rod

CQ2 Series

ø32, ø40, ø50, ø63, ø80, ø100

RoHS



How to Order

With auto switch **CDQ2** **B** **32** **M** - **30** **D** **M** **Z** - **L** **W** - **M9BW**

With auto switch
(Built-in magnet)

Mounting

B	Through-hole (Standard)
A	Both ends tapped
L	Foot
LC	Compact foot
F	Rod flange
G	Head flange
D	Double clevis

* Mounting brackets are shipped together, (but not assembled).

Bore size

32	32 mm
40	40 mm
50	50 mm
63	63 mm
80	80 mm
100	100 mm

Number of auto switches

Nil	2 pcs.
S	1 pc.
n	n pcs.

Auto switch

Nil	Without auto switch
------------	---------------------

* Applicable auto switch is the same as for the standard model.

With stable lubrication function (Lub-retainer)

Cylinder stroke

Bore size (mm)	Standard stroke (mm)
32, 40	5, 10, 15, 20, 25, 30, 35, 40, 45, 50, 75, 100
50 to 100	10, 15, 20, 25, 30, 35, 40, 45, 50, 75, 100

Action

D	Double acting
----------	---------------

Body option

Nil	Standard (Rod end female thread)
F	With boss on head end
M	Rod end male thread

* Combination of body options (FM) is available.

Mounting bolt

Nil	None
L	Shipped together

* Mounting bolt is shipped together only when the mounting bracket is "B".
* Mounting bolt size is the same as the standard model.
* Mounting bolt is shipped together.

Rod end bracket

Nil	None
D	Simple joint A type + Joint
E	Simple joint B type + Joint
V	Single knuckle joint
W	Double knuckle joint

* The single knuckle joint and double knuckle joint cannot be mounted for the rod end female thread.
* A knuckle joint pin is not provided with the single knuckle joint.
* The simple joint A and B types cannot be mounted for the rod end male thread.
* Rod end bracket is shipped together with the product, but not assembled.

Auto switch mounting groove

Z	ø32 to ø100	4 surfaces
----------	-------------	------------

Specifications

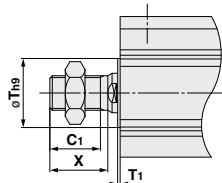
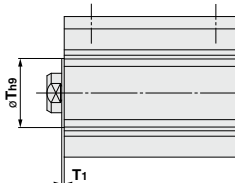
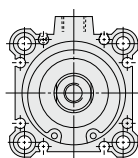
Bore size (mm)	32	40	50	63	80	100
Minimum operating pressure	0.1 MPa					
Other specifications	Same as the standard model					
Dimensions	See below					

Dimensions

(Dimensions other than those shown below are the same as the standard model.)

ø32 to ø100

DMZ: Rod end male thread



Bore size	T	T ₁	C ₁	X
32	22	1	20.5	23.5
40	28	1	20.5	23.5
50	35	2	24	26.5
63	35	2	24	26.5
80	—	—	32.5	35.5
100	—	—	32.5	35.5

* The mounting dimensions of the mounting bracket are the same as the standard model.

Air Slide Table with Stable Lubrication Function (Lub-retainer) Double Ported Type

MXQ□A Series

ø6, ø8, ø12, ø16, ø20, ø25

RoHS



How to Order

MXQ 12 A M - 30 ZA - M9BW □ - □

With stable lubrication function (Lub-retainer)

Bore size	Body option: Double ported type A	Standard stroke (mm)
6	 Switch mounting groove, Port, Auto switch mounting groove	10, 20, 30, 40, 50
8	 Switch mounting groove, Port, Auto switch mounting groove	10, 20, 30, 40, 50, 75
12	 Switch mounting groove, Port, Auto switch mounting groove	10, 20, 30, 40, 50, 75, 100
16	 Switch mounting groove, Port, Auto switch mounting groove	10, 20, 30, 40, 50, 75, 100, 125
20	 Port, Auto switch mounting groove	10, 20, 30, 40, 50, 75, 100, 125, 150
25	 Two auto switch mounting grooves, Port	10, 20, 30, 40, 50, 75, 100, 125, 150

Number of auto switches

Nil	2
S	1
n	n

Auto switch

Nil Without auto switch

* Refer to the **Web Catalog** for applicable auto switches.

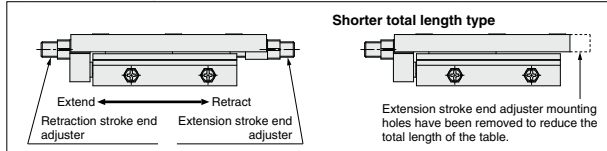
Adjuster option/Functional option combinations

* For details, refer to the next page.

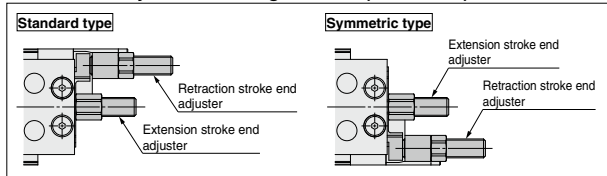
Made to Order

* This differs from the standard product.
Refer to below for details.

Adjuster Mounting Position (Exception: Centralized Adjuster) (ø12 to ø25)



Centralized Adjuster Mounting Position (ø12 to ø25)



Specifications

Bore size (mm)		6	8	12	16	20	25
Minimum operating pressure	Rubber bumper Shock absorber Metal stopper	0.15 MPa					
	Metal stopper with bumper	—	0.3	0.3	0.2	0.2	0.2
Other specifications		Same as the standard model					
Dimensions		Refer to page 1209.					

Weight

Model	Standard stroke [mm]						Reduction of the shorter total length type	Additional weight of adjuster option		Extra for option End lock
	10	20	30	40	50	75		Extension stroke end	Retraction stroke end	
MXQ6AM	150	150	190	210	230	—	-6	10	10	40
MXQ8AM	160	180	200	230	290	320	-6	10	10	60

* ø12 to ø25: Same as the standard product

Made to Order

ø6, ø8

Made to Order

[Click here for details](#)

Symbol	Functional option
-X33	Without built-in auto switch magnet
-X42	Anti-corrosive guide unit
-X2202	Extension stroke end adjuster fixed from the axial direction

Made to Order

ø12 to ø25

Made to Order

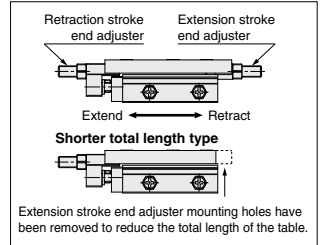
[Click here for details](#)

Symbol	Functional option
-X11	Long adjustment bolt (10 mm longer adjustment range)
-X12	Long adjustment bolt (20 mm longer adjustment range)
-X28	Long adjustment nut and bolt
-X33	Without built-in auto switch magnet
-X42	Anti-corrosive guide unit
-X2202	Extension stroke end adjuster fixed from the axial direction

Adjuster options/Functional option combinations ø6, ø8

Symbol	Adjuster type*2,3		Adjuster mounting position*1		Functional option combination	
			Extension stroke end	Retraction stroke end	Nil	
					Without functional option	End lock
Z	Without adjuster				○	○
ZA			●	●	○	×
ZB	Metal stopper with bumper		●		○	○
ZC			●	●	○	×
ZD			●	●	○	×
ZE	Rubber stopper		●		○	○
ZF			●	●	○	×
ZH	Shock absorber/RJ		●	●	○	○
ZK			●	●	○	×
ZL	Metal stopper		●		○	○
ZM			●	●	○	×
ZN			●	●	○	×
ZA	Shorter total length type*4	Without adjuster			○	○
ZP		Rubber stopper	●	●	○	×
ZS		Metal stopper with bumper	●	●	○	×
ZT		Metal stopper	●	●	○	×
ZBF	Metal stopper with bumper	Rubber stopper	●	●	○	×
ZBM		Metal stopper	●	●	○	×
ZEC	Rubber stopper	Metal stopper with bumper	●	●	○	×
ZEM		Metal stopper	●	●	○	×
ZHC	Shock absorber/RJ	Metal stopper with bumper	●	●	○	×
ZHF		Rubber stopper	●	●	○	×
ZHM	Metal stopper	Metal stopper	●	●	○	×
ZLC		Metal stopper with bumper	●	●	○	×
ZLF	Extension stopper	Rubber stopper	●	●	○	×

Adjuster Mounting Position



- *1 ●: Shipped together with the product, but not assembled
Without any symbol for the adjuster mounting position: The adjuster can be mounted afterward.
- *2 The metal stopper with bumper is not available for ø6.
- *3 When mounting a retraction stroke end adjuster afterward, order the long adjustment bolt specifications (-X11). (A shock absorber cannot be used with this model.)
- *4 Extension stroke end adjuster mounting holes have been removed to reduce the total length of the table.

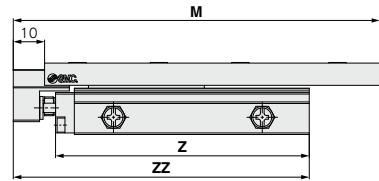
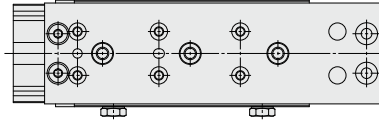
ø12 to ø25

Symbol	Adjuster type*9		Adjuster mounting position*1,8		Functional option combination									
			Extension stroke end	Retraction stroke end	Nil	1	2	3	4	5	6	7	8	9
					Without functional option	With buffer*2,3	With end lock	Axial piping*6	With buffer, end lock	With Buffer, axial piping*2,6	Centralized adjuster	Centralized adjuster (Symmetric)*7	Buffer, Centralized adjuster*2	Buffer, Centralized adjuster (Symmetric)*2,7
Z	Without adjuster				○	○	○	○	○	○	×	×	×	×
ZA			●	●	○	×	×	×	×	×	×	×	×	×
ZB	Metal stopper with bumper		●		○	×	○	○	×	×	×	×	×	×
ZC			●	●	○	×	×	○	×	×	○	○	○	○
ZD			●	●	○	×	×	○	×	×	○	○	○	○
ZE	Rubber stopper		●		○	○	○	○	○	×	×	×	×	×
ZF			●	●	○	×	×	○	×	×	○	○	○	○
ZG			●	●	○	×	×	○	×	×	○	○	○	○
ZH	Shock absorber/RJ		●		○	×	○	○	×	×	×	×	×	×
ZJ			●	●	○	×	×	○	×	×	○	○	○	○
ZK			●	●	○	×	×	○	×	×	○	○	○	○
ZL	Metal stopper		●		○	○	○	○	○	×	×	×	×	×
ZM			●	●	○	×	×	○	×	×	○	○	○	○
ZA	Shorter total length type*4	Without adjuster			○	○*5	×	○	×	○*5	×	×	×	×
ZP		Rubber stopper	●	●	○	×	×	○	×	×	×	×	×	×
ZQ		Shock absorber/RJ	●	●	○	×	×	○	×	×	×	×	×	×
ZS		Metal stopper with bumper	●	●	○	×	×	○	×	×	×	×	×	×
ZT	Metal stopper	●	●	○	×	×	○	×	×	×	×	×	×	
ZBF	Metal stopper with bumper	Rubber stopper	●	●	○	×	×	○	×	×	○	○	○	○
ZBJ		Shock absorber/RJ	●	●	○	×	×	○	×	×	○	○	○	○
ZBM	Rubber stopper	Metal stopper	●	●	○	×	×	○	×	×	○	○	○	○
ZEC		Metal stopper with bumper	●	●	○	×	×	○	×	×	○	○	○	○
ZEJ	Shock absorber/RJ	Shock absorber/RJ	●	●	○	×	×	○	×	×	○	○	○	○
ZEM		Metal stopper	●	●	○	×	×	○	×	×	○	○	○	○
ZHC	Metal stopper with bumper	Metal stopper with bumper	●	●	○	×	×	○	×	×	○	○	○	○
ZHF		Rubber stopper	●	●	○	×	×	○	×	×	○	○	○	○
ZHM	Metal stopper	Metal stopper	●	●	○	×	×	○	×	×	○	○	○	○
ZLC		Metal stopper with bumper	●	●	○	×	×	○	×	×	○	○	○	○
ZLF	Extension stopper	Rubber stopper	●	●	○	×	×	○	×	×	○	○	○	○
ZLJ		Shock absorber/RJ	●	●	○	×	×	○	×	×	○	○	○	○

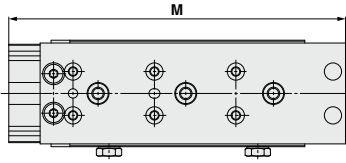
- *1 ●: Shipped together with the product, but not assembled
Without any symbol for the adjuster mounting position: The adjuster can be mounted afterward.
- *2 For the buffer mechanism, the buffer stroke will be shorter for the stroke that is adjusted by the extension stroke end adjuster.
- *3 If it is necessary to install a retraction stroke end adjuster with a buffer mechanism, use a buffer and centralized adjuster provided with a retraction stroke end adjuster on the rear end of the body. End lock or axial piping options cannot be mounted to centralized adjuster specification models.
- *4 Extension stroke end adjuster mounting holes have been removed to reduce the total length of the table.
- *5 The shorter total length type can be used, but a retraction stroke end adjuster cannot be mounted afterward.
- *6 For axial piping, there are no piping ports on both sides.
- *7 Only the centralized adjuster is symmetric.
- *8 For details on the adjuster mounting position, refer to the previous page.
- *9 The metal stopper with bumper option is not available for ø6.

Dimensions (Dimensions other than those shown below are the same as the standard model.)

MXQ6AM



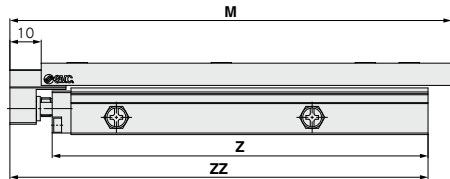
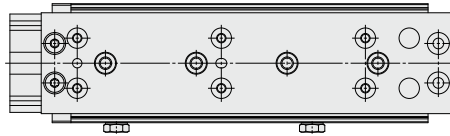
Shorter total length type



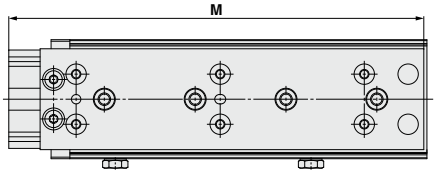
Model	M		ZZ
	Standard type	Shorter total length type	
MXQ6AM-10Z	74	64.5	69.5
MXQ6AM-20Z	84	74.5	69.5
MXQ6AM-30Z	105	95.5	82.5
MXQ6AM-40Z	117	107.4	94.5
MXQ6AM-50Z	127	117.5	104.5

(mm)

MXQ8AM



Shorter total length type



Model	M		ZZ
	Standard type	Shorter total length type	
MXQ8AM-10Z	78	69.5	70.5
MXQ8AM-20Z	88	79.5	80.5
MXQ8AM-30Z	98	89.5	90.5
MXQ8AM-40Z	114	105.5	106.5
MXQ8AM-50Z	141	132.5	133.5
MXQ8AM-75Z	166	157.5	135.5

(mm)

The MXQ12AM/MXQ16AM/MXQ20AM/
MXQ25AM dimensions are the same as the
standard model.

Compact Guide Cylinder with Stable Lubrication Function (Lube-retainer)

MGP Series

RoHS

ø20, ø25, ø32, ø40, ø50, ø63, ø80, ø100



How to Order

Compact guide cylinder

MGP **M** **25** **M** - **30** **Z** - **M9BW**

Compact guide cylinder

Bearing type

M	Slide bearing
L	Ball bushing

Bore size

20	20 mm
25	25 mm
32	32 mm
40	40 mm
50	50 mm
63	63 mm
80	80 mm
100	100 mm

Port thread type

Nil	Rc
TN	NPT
TF	G

With stable lubrication function (Lube-retainer)

Number of auto switches

Nil	2 pcs.
S	1 pc.
n	n pcs.

Auto switch

Nil	Without auto switch (Built-in magnet)
------------	--

* Applicable auto switch is the same as for the standard model.

Cylinder stroke

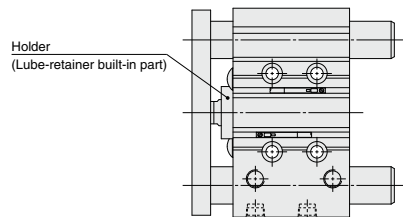
Bore size (mm)	Standard stroke (mm)
20, 25	20, 30, 40, 50, 75, 100, 125, 150, 175, 200, 250, 300, 350, 400
32 to 100	25, 50, 75, 100, 125, 150, 175, 200, 250, 300, 350, 400

* Intermediate strokes are the same as standard model.

Specifications

Bore size (mm)	20	25	32	40	50	63	80	100
Minimum operating pressure	0.15 MPa							
Other specifications	Same as the standard model							
Dimensions	See right side							

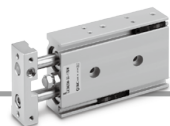
Dimensions (Dimensions are the same as the standard model.)



With Stable Lubrication Function (Lube-retainer) Dual Rod Cylinder/Compact Type

CXSJ Series

ø6, ø10, ø15, ø20, ø25, ø32



How to Order

CXSJ **M** **20** **M** - **100** - **M9BW**

Compact type

Bearing type

M	Slide bearing
L	Ball bushing bearing

With stable lubrication function (Lube-retainer)

Bore size [mm]	Standard stroke [mm]
6	10, 20, 30, 40, 50
10	10, 20, 30, 40, 50, 75
15, 20	10, 20, 30, 40, 50, 75, 100
25, 32	10, 20, 30, 40, 50, 75, 100

Number of auto switches

Nil	2 pcs.
S	1 pc.
n	n pcs.

Auto switch

Nil	Without auto switch (Built-in magnet)
------------	---------------------------------------

* Applicable auto switch is the same as that of the standard model.

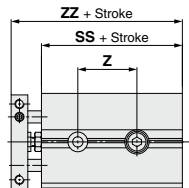
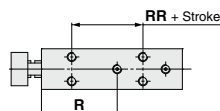
Specifications

Bore size [mm]	6	10	15	20	25	32
Minimum operating pressure	0.2 MPa		0.15 MPa			0.1 MPa
Piston speed	50 to 800 mm/s		50 to 700 mm/s		50 to 600 mm/s	
Other specifications	Same as the standard model					
Dimensions	See below.					

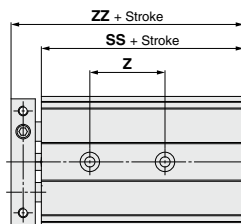
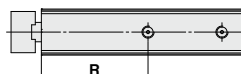
Dimensions

(Dimensions other than those shown below are the same as those of the standard model.)

CXSJ□6, 10M



CXSJ□15 to 32M



Model	R	RR	SS	ZZ
CXSJ□6M	25	13.5	36.5	46.5
CXSJ□10M	33.5	17	49.5	61
CXSJ□15M	44	—	63.5	76
CXSJ□20M	51	—	73.5	90
CXSJ□25M	52	—	76.5	93
CXSJ□32M	66	—	90.5	110.5

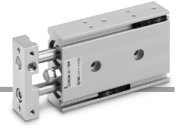
Symbol	Z						
Model	10	20	30	40	50	75	100
CXSJ□6M	19.5	29.5	39.5	49.5	59.5	—	—
CXSJ□10M	23	33	43	53	63	88	—
CXSJ□15M	31	—	41	—	—	51	61
CXSJ□20M	36	—	46	—	—	—	66
CXSJ□25M	37	—	47	—	—	—	67
CXSJ□32M	50	—	60	—	—	—	80

Dual Rod Cylinder with Stable Lubrication Function (Lub-retainer)

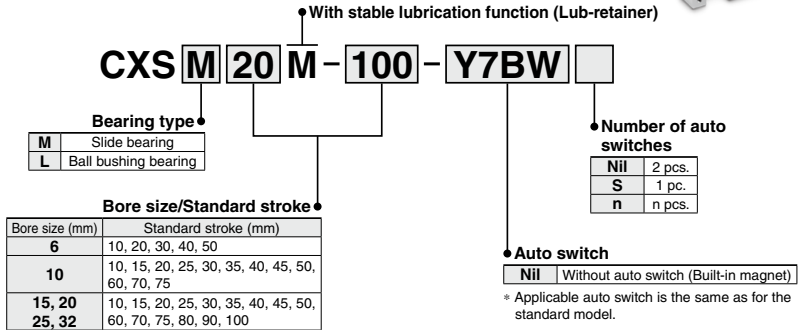
CXS Series

∅6, ∅10, ∅15, ∅20, ∅25, ∅32

RoHS



How to Order

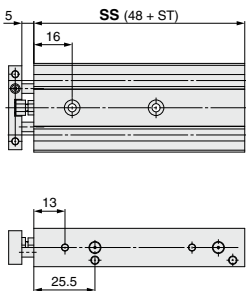


Specifications

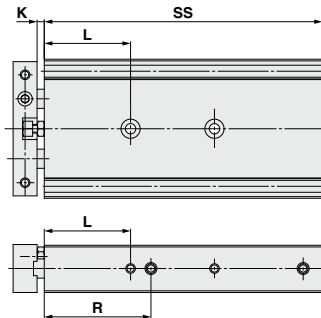
Bore size (mm)	6	10	15	20	25	32
Minimum operating pressure	0.2 MPa	0.15 MPa			0.1 MPa	
Piston speed	50 to 300 mm/s	50 to 800 mm/s	50 to 700 mm/s		50 to 600 mm/s	
Other specifications	Same as the standard model					
Dimensions	See below					

Dimensions (Dimensions other than those shown below are the same as the standard model.)

CXS□6



CXS□10 to 32



Model	K	L	R
CXS□10	4	25	35
CXS□15	3	36	44.5
CXS□20	6	36	50.5
CXS□25	6	36	52
CXS□32	4	40	66

Symbol	SS																
Model	Stroke	10	15	20	25	30	35	40	45	50	60	70	75	80	90	100	
CXS□10	70	75	80	85	90	95	100	105	110	120	130	135	—	—	—	—	
CXS□15	76	81	86	91	96	101	106	111	116	126	136	141	146	156	166		
CXS□20	86	91	96	101	106	111	116	121	126	136	146	151	156	166	176		
CXS□25	88	93	98	103	108	113	118	123	128	138	148	153	158	168	178		
CXS□32	102	107	112	117	122	127	132	137	142	152	162	167	172	182	192		