

Flame Resistant (Equivalent to UL-94 Standard V-0) Speed Controller with One-touch Fittings

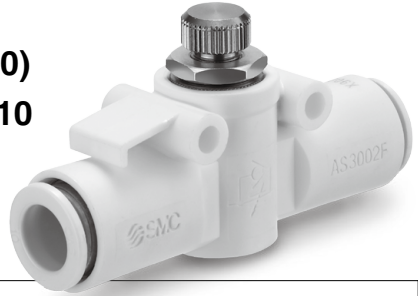
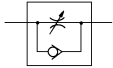
AS-X900

In-line Type

RoHS

- Uses flame-resistant resin (Equivalent to UL-94 Standard V-0)
- Applicable tubing O.D.: $\varnothing 6$, $\varnothing 8$, $\varnothing 10$

Symbol



Related Products

Speed Controller with One-touch Fitting AS□□1F-W2



P.1014

Speed Controller Adjustable by Flat Head Screwdriver with One-touch Fitting AS□□1F-W2D



P.1119

Speed Exhaust Controller ASV



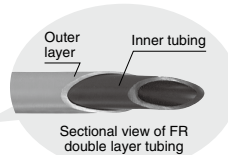
P.1068

FR Soft Nylon Tubing TRS



P.701

FR Double Layer Tubing TRB/TRBU



P.702

Model

Model	Applicable tubing O.D.		
	Metric size		
	6	8	10
AS2052F-06-X900	●		
AS2052F-08-X900		●	
AS3002F-10-X900			●

Specifications

Fluid	Air
Proof pressure	1.05 MPa
Max. operating pressure	0.7 MPa
Min. operating pressure	0.1 MPa
Ambient and fluid temperatures	-5 to 60°C (No freezing)
Applicable tubing materials	FR double layer, FR soft nylon*1

*1 Use caution when operating at the max. operating pressure. (Refer to pages 701 and 702 for details on tubing.)

* Brass parts are electroless nickel plated.

Specifications not listed are the same as those of the standard product. For details, refer to page 841.

AS-X900

How to Order

AS 205 2F - 06 - X900

Body size

205	1/4 standard
300	3/8 standard

Flame resistant (Equivalent to UL-94 Standard V-0)

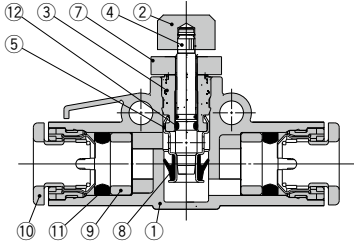
Applicable tubing O.D.*1

06	ø6
08	ø8
10	ø10

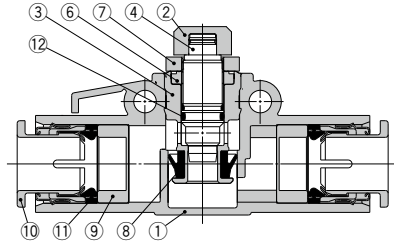
*1 To select the applicable tubing O.D., refer to the "Model" chart on page 1019.

Construction

AS2052F-X900



AS3002F-X900

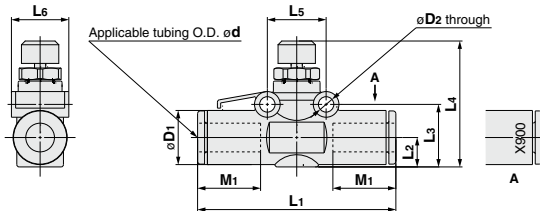


Component Parts

No.	Description	Material	Note
1	Body A	Flame-resistant PBT	
2	Knob	Brass	Electroless nickel plating
3	Body B	Brass	Electroless nickel plating
4	Needle	Brass	Electroless nickel plating
5	Seat ring	Brass	Electroless nickel plating
6	Needle guide	Brass	Electroless nickel plating

No.	Description	Material	Note
7	Lock nut	Steel	
8	U-seal	HNBR	
9	Spacer	PBT	
10	Cassette	—	
11	Seal	NBR	
12	O-ring	NBR	

Dimensions



Model	Applicable tubing O.D. d	D1	D2	L1	L2	L3	L4*1		L5	L6	M1	Weight [g]
							Max.	Min.				
AS2052F-06-X900	6	12.8	4.3	53.2	6.7	16.3	33.2	28.2	17	15.7	17	20
AS2052F-08-X900	8	15.2	4.3	57.2	8	17.6	34.5	29.5	17	16.1	18	23
AS3002F-10-X900	10	18.5	4.3	70.8	9.8	21.7	41	36	22	20.5	21	43

*1 Reference dimensions

Caution

Be sure to read this before handling the products. Refer to page 11 for safety instructions and pages 19 to 22 for flow control equipment precautions.