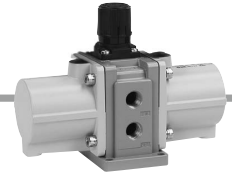


# Booster Regulator 25A-VBA Series



## How to Order



25A - VBA 40A - [ ] 04 [ ]

Series compatible with secondary batteries

Body size		Pressure increase ratio: Twice
10A	1/4", Handle-operated type	
20A	3/8", Handle-operated type	
40A	1/2", Handle-operated type	

Thread type\*1

Symbol	Thread type
Nil	Rc
F	G
N	NPT
T	NPTF

\*1 Thread types apply to the IN, OUT, and EXH ports of the VBA10A and to the IN, OUT, EXH, and gauge ports of the VBA20A and VBA40A. The gauge ports of the VBA10A are Rc thread type regardless of the thread type indication.

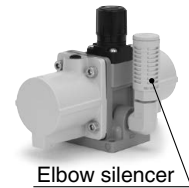
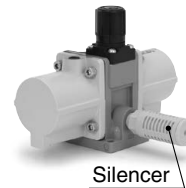
Option

Symbol	Option
Nil	None
N	Silencer
S	High-noise reduction silencer*1
LN	Elbow silencer*1
LS	Elbow high-noise reduction silencer*1

\*1 Refer to "Combination of Thread Type and Options."  
\* Pressure gauge is not available as an option.

Port size

Symbol	Port size	Applicable series
02	1/4	VBA10A
03	3/8	VBA20A
04	1/2	VBA40A



## Combination of Thread Type and Options

Body size	Thread type	Option				
		Nil	N	S	LN	LS
10A	Nil	●	●	●	●	●
	F	●	●	●	●	●
	N	●	●	—	●	—
	T	●	●	—	●	—
20A	Nil	●	●	●	/	/
	F	●	●	●		
	N	●	●	●		
	T	●	●	●		
40A	Nil	●	●	●	/	/
	F	●	●	●		
	N	●	●	●		
	T	●	●	●		

## Caution

- Not compatible with a low dew point
- VBA10A: Due to the close proximity of the IN and OUT sides of the gauge port and the handle of the booster regulator, a G43-10-01-X300/G46-SRB pressure gauge cannot be mounted as it will interfere with the handle.  
VBA20A/40A: The G43-10-01-X300/G46-SRB pressure gauge cannot be mounted as the mounting pitch of the IN and OUT sides of the gauge port of the booster regulator is smaller than the diameter of the pressure gauge. In order to mount the pressure gauge, piping which does not cause any interference must be prepared separately.

## Air Tank Compatibility Chart

Air tank	Booster regulator		
	25A-VBA10A	25A-VBA20A	25A-VBA40A
25A-VBAT05A1			
25A-VBAT05S1	●	—	—
25A-VBAT10A1			
25A-VBAT10S1	●	●	—
25A-VBAT20A1	—	●	●
25A-VBAT20S1	—	●	●
25A-VBAT38A1	—	●	●
25A-VBAT38S1	—	●	●

\* Refer to page 251 for details on air tanks.

\* The 25A- series specifications and dimensions are the same as those of the standard model. For details, refer to the [Web Catalog](#).

# Air Tank

# 25A-VBAT Series



## How to Order



- For the booster regulator, use the 25A-VBA.
- It can be used alone as a tank.

**Standard product**  
(For Japanese market)

\* The thread type for each port is Rc.

**25A - VBAT 10 A 1**

### Tank internal capacity

Symbol	Internal capacity
05	5 L
10	10 L
20	20 L
38	38 L

### Material

Symbol	Material
A	Carbon steel (SS400)
S	Stainless steel

- \* Order drain valve (VBAT-V2) separately.
- \* Safety valve is not available as an option.

- Series compatible with secondary batteries

## ⚠ Caution

- When used as a single unit (not connected with a booster regulator) and pressurized at over 1 MPa at normal temperatures, the air tank falls under the scope of the “High Pressure Gas Safety Act” in Japan.

\* The 25A- series specifications and dimensions are the same as those of the standard model.

For details, refer to the [Web Catalog](#).