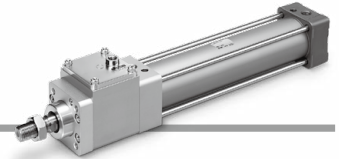


Cylinder with Lock

Double Acting, Single Rod

MWB-X3075



How to Order

M WB B 40 - 50 - X3075

• **Built-in magnet**

Nil	Without magnet
D	Built-in magnet

• **Cylinder stroke [mm]**
Refer to "Standard Stroke" below.

• **Port thread type**

Nil	Rc
TN	NPT
TF	G

• **Mounting**

B	Basic
L	Axial foot
F	Rod flange
G	Head flange
C	Single clevis
D	Double clevis
T	Center trunnion

• **Bore size**

32	32 mm
40	40 mm
50	50 mm
63	63 mm
80	80 mm
100	100 mm

Table 1

Bore size (mm)	Usage	
	Lock	Brake
32	OK	OK
40	OK	OK
50	OK	OK
63	OK	OK
80	OK	OK
100	OK	OK

This product provides braking function and locking function.

These functions are defined as follows:

- Braking means to stop a moving object (intermediate stop or emergency stop).
- Locking means to retain a stationary object in place (drop prevention or holding position).

Table 2 Standard Stroke

Bore size	Standard stroke	
	Stroke range ①	Stroke range ②
32	25, 50, 75, 100, 125, 150, 175, 200, 250, 300, 350, 400, 450, 500	Up to 1800
40	25, 50, 75, 100, 125, 150, 175, 200, 250, 300, 350, 400, 450, 500	
50	25, 50, 75, 100, 125, 150, 175, 200, 250, 300, 350, 400, 450, 500, 600	
63	25, 50, 75, 100, 125, 150, 175, 200, 250, 300, 350, 400, 450, 500, 600	
80	25, 50, 75, 100, 125, 150, 175, 200, 250, 300, 350, 400, 450, 500, 600, 700, 800	
100	25, 50, 75, 100, 125, 150, 175, 200, 250, 300, 350, 400, 450, 500, 600, 700, 800	

* The manufacturing of intermediate strokes is possible. (Spacers are not used.)

* Applicable strokes should be confirmed according to the usage. For details, refer to the Air Cylinders Model Selection in the **Web Catalog** or Best Pneumatics Catalog. In addition, products that exceed the stroke range ① might not be able to fulfill the specifications due to deflection, etc.

SMC validation products have been validated based on ISO 13849-2: 2012 Annex A.